

COUNTY OF LOS ANGELES
ROAD DEPARTMENT

PRECISE
BENCH MARK LIST



PUENTE QUAD
1965 ADJUSTMENT

PREFACE

The Road Department level net is composed of more than 1,000 miles of levels supporting in excess of 10,000 bench marks. In 1964-65, a major readjustment of the net was undertaken. To emphasize the complete break with previous elevations, the SY, SG & SL series bench marks have been re-labeled BY, BG & BL, respectively.

To facilitate the adjustment, indexing, and distribution of adjusted values of the net, the County territory was divided into 31 quads or areas. For identification purposes each quad was given a name, viz., "Rosemead," "La Mirada," "Santa Fe," etc. When bench marks and elevations in the Road Department net are used, the name of the quad in which the bench mark is located and the date of the adjustment of the elevation must be included in the bench mark description, e.g.,

BG 1887 --L+BN IN CONC HDWL OF DRAIN PIPE UNDER DR 218 FT
NE +18 FT SE C/L INT SAN JOSE HILLS RD +CAMERON AVE MKD (BM)
(COVINA --1965) ELEV. 696.238

It is expected that this general adjustment will, for the most part, remain sound for the next 8 to 12 years. As new circuits are completed, however, re-adjustment of individual quads may become advisable. It is expected that these subsequent adjustments will be in the nature of a few hundredths of a foot. When a quad is re-adjusted, new elevation lists will be published and the date of the re-adjustment will replace the "1965" at the end of the bench mark description. Two bench marks in the same quad with different adjustment dates will not normally join each other. Since all adjustments taper out to nothing at the periphery of the quad, any bench mark in one quad will join any bench mark in another quad regardless of their respective adjustment dates.

The basic accuracy of the net is reflected by an indicated field probable error of plus or minus 0.012 foot per mile of leveling as determined from 298 conditions of closure. However, many years experience in vertical control in the greater Los Angeles basin and Antelope Valley indicate that because of varying degrees of subsidence and heaving, the true datum is recovered only by obtaining substantial agreement of a number of bench marks.

The users of this net are invited to assist in its maintenance by notifying this Department of cases of obliteration, apparent mistakes in descriptions or elevations, and proven disturbance of bench marks.

DATUM: U. S. Coast and Geodetic Survey Sea Level Datum
of 1929, through the medium of the Los Angeles
County Engineer Precise Level Net, 1963 Adjust-
ment.

ABBREVIATIONS USED IN BENCH MARK LISTINGS

ABUT - - - - -	Abutment	EC - - - - -	End of Curve
ALG - - - - -	Along	ENT - - - - -	Entrance
ANG PT - - - - -	Angle Point	FL - - - - -	Floor
B/W - - - - -	Back of Walk	FTG - - - - -	Footing
BCR - - - - -	Beginning of Curb Return	F/W - - - - -	Front of Walk
BC - - - - -	Beginning of Curve	GAR - - - - -	Garage
BLDG - - - - -	Building	HDWL - - - - -	Headwall
BM - - - - -	Bench Mark	HSE - - - - -	House
BT SPK - - - - -	Boat or Bolt Spike	INT - - - - -	Intersection
BR CAP - - - - -	Brass or Bronze Cap	IP - - - - -	Iron Pipe
C B - - - - -	Catch Basin	LT - - - - -	Left
CTR - - - - -	Center	LACE - - - - -	L. A. City Engineer
C/L - - - - -	Center Line	LACS - - - - -	L. A. County Engineer
C/L INT - - - - -	Center Line Intersection	LAFC - - - - -	L. A. Co. Flood Control
C/L PROD - - - - -	Center Line Produced	L+BN - - - - -	Lead and Bench Nail
CONC - - - - -	Concrete	L+BR - - - - -	Lead and Brad
COR - - - - -	Corner	L+N - - - - -	Lead and Nail
COE - - - - -	Corps of Engineers	L+RDBM TAG - - - - -	Lead and Road Dept. Bench Mark Tag
CULV - - - - -	Culvert	L+SPK - - - - -	Lead and Spike
CB - - - - -	Curb	L+T - - - - -	Lead and Tack
CS MON - - - - -	County Engineer Monument	MCR - - - - -	Middle of Curb Return
CS BR CAP - - - - -	County Engineer Brass Cap	MKD - - - - -	Marked
CT SPK - - - - -	Cut Spike	MC - - - - -	Middle of Curve
DR - - - - -	Drive or Driveway	MON - - - - -	Monument
E/O - - - - -	East of	N/O - - - - -	North of
ECR - - - - -	End of Curb Return	NR - - - - -	Near

ABBREVIATIONS USED IN BENCH MARK LISTINGS . . . CONTINUED

OPP - - - - - Opposite
PI - - - - - Point of Intersection
PK+W - - - - - PK Nail and Washer
P/L - - - - - Property Line
POST - - - - - Point on Semi-Tangent
PP - - - - - Power Pole
PVMT - - - - - Pavement
PROD - - - - - Produced
RD - - - - - Road
RDEM - - - - - Road Dept. Bench Mark
RR - - - - - Railroad
RT - - - - - Right
R/W - - - - - Right of Way
SDMH - - - - - Storm Drain Manhole
SMH - - - - - Sewer Manhole
SPK - - - - - Spike
ST+W - - - - - Spike Tin and Washer
S/O - - - - - South of
TP - - - - - Telephone Pole
USC+GS - - - - - U. S. Coast and Geodetic Survey
USGS - - - - - U. S. Geological Survey
WK - - - - - Walk
W/O - - - - - West of

COVINA

QUAD

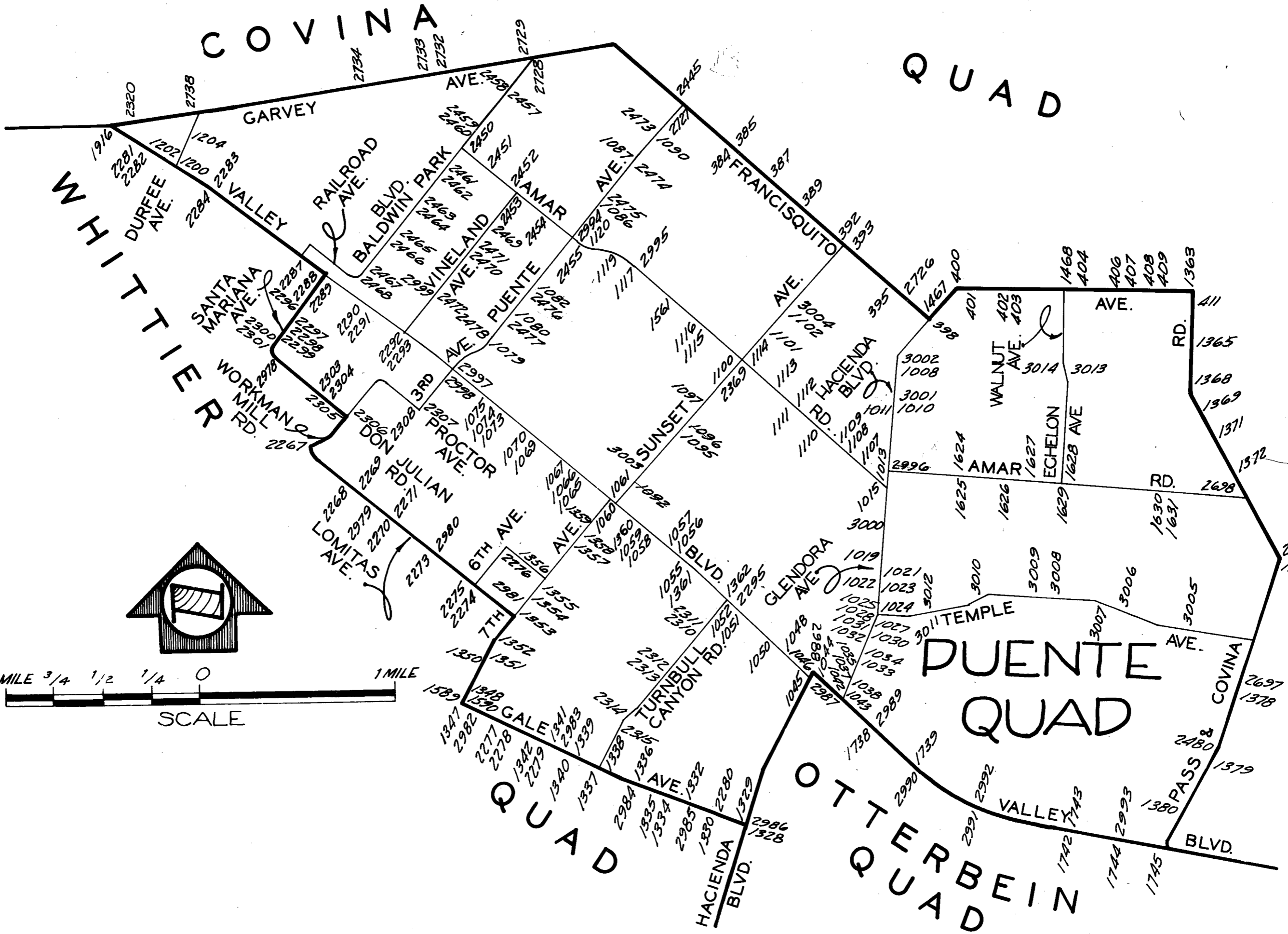
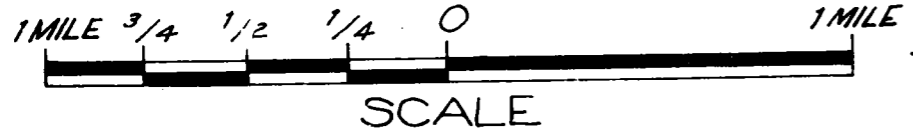
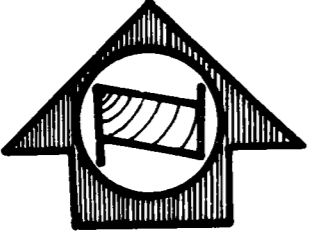
WHITTIER

QUAD

COVINA

PUENTE QUAD

OTURBARDIN



K

QUAD-YEAR	ELEV	DESCRIPTION (INCLUDE QUAD AND YEAR IN DESCRIPTION)	BM	NUMBER
BASELINE (1965)	335.308	L+T IN W CB W OUT 1FT S BCR @ SW COR FRANCISQUITO AVE + 66FT S C/L INT	BG	384
BASELINE (1965)	336.268	L+T IN W CB OF WILLOW AVE 1FT N BCR @ NW COR FRANCISQUITO AVE 20FT W + 64FT N C/L INT	BG	385
BASELINE (1965)	337.533	RDBM TAG IN N CB FRANCISQUITO AVE 2FT E BCR @ NE COR RAMA DR 30FT N + 57FT E OF C/L INT	BG	387
BASELINE (1965)	338.506	PK IN E CB ORANGE AVE 2FT S BCR @ SE COR FRANCISQUITO AVE 66FT S + 18FT E C/L INT	BG	389
BASELINE (1965)	341.454	RDBM TAG CB 6FT E C/L PROD N END OF SERVICE RD 50FT S C/L FRANCISQUITO AVE + 55FT W C/L SUNSET AVE	BG	392
BASELINE (1965)	341.570	L+BRAD 6FT E BCR 30FT S C/L FRANCISQUITO AVE + 80FT E C/L SUNSET AVE	BG	393
BASELINE (1965)	343.209	L+BRAD 3FT E OF CATCH BASIN 30FT S C/L FRANCISQUITO AVE + 55FT W C/L CALIFORNIA AVE	BG	395
BASELINE (1965)	345.364	RDBM TAG IN CB 75FT S C/L FRANCISQUITO AVE 30FT E C/L HACIENDA BLVD	BG	398
BASELINE (1965)	354.082	CS MON @ C/L INT FRANCISQUITO AVE + HACIENDA BLVD	BG	400
BASELINE (1965)	356.215	L+T 4FT E BCR @ SE COR GRIFFITHS AVE + FRANCISQUITO AVE	BG	401
BASELINE (1965)	363.125	L+N @ BCR @ SW COR MULLENDER AVE + FRANCISQUITO AVE	BG	402
BASELINE (1965)	363.165	L+N @ S BCR @ SE COR MULLENDER AVE + FRANCISQUITO AVE	BG	403
BASELINE (1965)	371.914	SQ HD SPK IN N CB OF CATCH BASIN @ NE COR FRANCISQUITO AVE + WALNUT AVE 18FT N + 40FT E C/L INT MKD (AZ 202)	BG	404
BASELINE (1965)	382.250	L+T 1FT S OUT @ SW COR INDIAN SUMMER AVE + FRANCISQUITO AVE	BG	406
BASELINE (1965)	382.583	L+T 2FT S OUT @ SE COR INDIAN SUMMER AVE + FRANCISQUITO AVE	BG	407
BASELINE (1965)	390.237	CS TRI MON C/L INT FRANCISQUITO AVE + VALINDA AVE N MKD (PUENTE J6)	BG	408
BASELINE (1965)	392.479	SQ HD SPK E CB 6FT S BCR @ SE COR FRANCISQUITO AVE + VALINDA AVE 53FT S + 30FT E C/L INT MKD (A2207)	BG	409
BASELINE (1965)	407.060	L+BN S CB 10FT E BCR 20FT S + 55FT E C/L INT PASS+ COVINA RD + FRANCISQUITO AVE	BG	411
PUENTE (1965)	339.695	L+BN CONC CB 1FT S BCR 27FT E + 70FT S C/L INT HACIENDA BLVD + MAPLEGROVE ST	BG	1009
PUENTE (1965)	333.869	L+T CONC CB 0.5FT N BCR 50FT N + 40FT E C/L INT HACIENDA BLVD + FAIRGROVE AVE TO THE E	BG	1010
PUENTE (1965)	333.144	L+T CONC CB 6FT S OUT 5FT S + 40FT W C/L INT HACIENDA BLVD + FAIRGROVE AVE TO THE E	BG	1011

QUAD-YEAR	ELEV	DESCRIPTION (INCLUDE QUAD AND YEAR IN DESCRIPTION)	BM NUMBE
PUENTE (1965)	328.167	L+BN MCR @ NE COR AMAR RD + HACIENDA BLVD	BG 1013
PUENTE (1965)	326.341	L+T E CB GLENDORA AVE 2FT S OF N END CATCH BASIN C/L PROD ELLIOTT AVE 40FT E C/L HACIENDA BLVD	BG 1015
PUENTE (1965)	331.987	LACE. MON @ C/L INT GLENDORA AVE + SIERRA VISTA CT TO THE W (N EDGE OF BRAS OUT)	BG 1019
PUENTE (1965)	333.265	CS MON @ C/L INT GLENDORA AVE + SIERRA VISTA CT TO THE E (USE S EDGE) OUT	BG 1021
PUENTE (1965)	335.485	CS MON @ C/L INT GLENDORA AVE + MONTANA AVE (USE N EDGE) OUT	BG 1022
PUENTE (1965)	336.932	L+ SPK S CB 7FT E BCR @ SE COR GLENDORA AVE + MONTANA AVE MKD (PS 15) OUT	BG 1023
PUENTE (1965)	343.946	L+T E CB 5FT N BCR @ NE COR GLENDORA AVE + TEMPLE AVE OUT	BG 1024
PUENTE (1965)	344.786	CS MON @ C/L INT GLENDORA AVE + TEMPLE AVE (USE N EDGE) OUT	BG 1025
PUENTE (1965)	349.883	CS MON @ C/L INT GLENDORA AVE + VICTORIA AVE (USE N EDGE)	BG 1027
PUENTE (1965)	352.329	L+T W EDGE CONC WK TO HSE NO 15700 VICTORIA AVE 32FT S C/L + 42FT E C/L GLENDORA AVE	BG 1028
PUENTE (1965)	355.153	L+T N END 1ST TO W ENT PUENTE COMMUNITY CHURCH 30FT E C/L GLENDORA AVE 125FT N C/L HILL ST	BG 1030
PUENTE (1965)	353.790	CS MON @ C/L INT GLENDORA AVE + HILL ST (USE N EDGE) OUT	BG 1031
PUENTE (1965)	349.360	L+T W CB GLENDORA AVE C/L PROD SAN JOSE AVE (MKD PS 33) OUT	BG 1032
PUENTE (1965)	343.170	CS MON NEAR C/L INT GLENDORA AVE + LAS VECINAS DR (USE W EDGE)	BG 1033
PUENTE (1965)	343.625	L+SPK S CB 0.3FT E BCR @ SE COR GLENDORA AVE + LAS VECINAS DR OUT	BG 1034
PUENTE (1965)	333.170	L+T W CB 2FT N BCR @ NW COR GLENDORA AVE + ROWLAND ST OUT	BG 1035
PUENTE (1965)	330.896	L+SPK S CB 2FT W BCR @ SW COR GLENDORA AVE + NELSON AVE MKD (PS 2) OUT	BG 1037
PUENTE (1965)	329.555	CS MON @ C/L INT GLENDORA AVE + NELSON AVE (USE S EDGE) OUT	BG 1038
BASELINE (1965)	328.637	L+SPK @ CTR CB RET @ NW COR OLD VALLEY BLVD + GLENDORA AVE MKD (PS 6)	BG 1042
BASELINE (1965)	328.691	3IN IP + USGS CAP 8IN UP @ PUENTE STA OF SPRR 35FT S C/L OLD VALLEY BLVD + 160FT W C/L GLENDORA	BG 1043
BASELINE (1965)	324.408	L+T CONC WK 4FT S OF SW COR OF BLDG NO 15703 30F E C/L RIDGEWAY ST + 30FT N C/L OLD VALLEY BLVD	BG 1044
BASELINE (1965)	322.309	RD MON IN WELL 8IN DN @ C/L INT OLD VALLEY BLVD + HACIENDA BLVD	BG 1045

QUAD-YEAR	ELEV	DESCRIPTION (INCLUDE QUAD AND YEAR IN DESCRIPTION)	BM	NUMBER
BASELINE (1965)	323.860	CS MON FLUSH 1FT E OF E CB 41FT E C/L HACIENDA BLVD + 10FT S OF S RAIL SPRR MKD (BM 11-114A)	BG	1046
PUENTE (1965)	313.219	L+BN NW COR CONC BASE OF SIGNAL BOX 70FT N C/L OLD VALLEY BLVD + 300FT E OF VALLEY NEW VALLEY BLVD	BG	1048
PUENTE (1965)	310.109	L+T CTR 1ST CONC STEP TO HSE NO 15328 E VALLEY BLVD 65FT S C/L	BG	1050
PUENTE (1965)	309.851	L+BN CTR CONC WALL IN CTR OF BRICK BLDG NO 15222 65FT S C/L VALLEY BLVD	BG	1051
PUENTE (1965)	309.050	L+BN CONC WK TO BLDG NO 15200 VALLEY BLVD 62FT S C/L + 62FT E C/L TURNBULL CANYON RD	BG	1052
PUENTE (1965)	305.028	L+T NW COR CONC WK TO BLDG NO 14952 VALLEY BLVD 72FT S C/L	BG	1055
PUENTE (1965)	304.471	L+T 10FT W BCR @ NE COR VALLEY BLVD + CALIFORNIA AVE	BG	1056
PUENTE (1965)	304.477	L+T N CB 10FT E BCR @ NW COR VALLEY BLVD + CALIFORNIA AVE 35FT N 35 FT W C/L INT	BG	1057
PUENTE (1965)	303.339	L+T NW COR CONC HDWL @ SE COR VALLEY BLVD + 8TH AVE 30FT S + 25FT E C/L INT	BG	1058
PUENTE (1965)	303.330	L+T IN NE COR CONC HDWL @ SW COR VALLEY BLVD + 8TH AVE 30FT S 25FT W C/L INT	BG	1059
PUENTE (1965)	302.660	L+BN WINGWALL TO SPRR BRIDGE 70FT N C/L VALLEY BLVD + 65FT E C/L SUNSET AVE 10FT S OF S RAIL	BG	1060
PUENTE (1965)	301.855	R D MON C/L SUNSET AVE 40FT N C/L VALLEY BLVD	BG	1061
PUENTE (1965)	297.824	L+BN IN E END CONC HDWL @ SW COR VALLEY BLVD + 6TH AVE C/L INT	BG	1065
PUENTE (1965)	299.548	L+BN N SIDE CONC @ SE COR WIER BOX VALLEY BLVD + ORANGE AVE 35FT S + 45FT E C/L INT	BG	1066
PUENTE (1965)	296.822	CS MON C/L PROD ORANGE AVE 19FT S C/L VALLEY BLVD	BG	1067
PUENTE (1965)	298.252	L+BN NW COR CONC HDWL @ SE COR VALLEY BLVD + 5TH AVE E C/L INT	BG	1069
PUENTE (1965)	298.226	L+T NE COR CONC HDWL @ SW COR VALLEY BLVD + 5TH AVE 25FT S + 25FT W C/L INT	BG	1070
PUENTE (1965)	295.747	CS MON 18FT S 2FT W C/L INT VALLEY BLVD + 4TH AVE	BG	1072
PUENTE (1965)	296.864	L+BN NE COR CONC HDWL @ SW COR VALLEY BLVD + 4TH AVE + 23FT W C/L INT	BG	1074
PUENTE (1965)	297.899	L+N NE COR WEIR BOX @ W P/L OF HSE NO 13936 VALLEY BLVD 35FT S C/L + 360FT W C/L 4TH AVE	BG	1075
PUENTE (1965)	296.285	RDBM TAG IN N CB 1FT E BCR @ NE COR NELSON AVE + PUENTE AVE 30FT N + 77FT E C/L INT	BG	1079
PUENTE (1965)	300.520	L+T N EDGE CONC WK TO HSE NO 423 PUENTE AVE 57FT W C/L + 100FT N C/L MOCCASIN ST	BG	1080
PUENTE (1965)	305.576	RDBM TAG W CB 1FT N BCR @ NW COR TEMPLE AVE + PUENTE AVE 65FT N + 40FT W C/L INT	BG	1082

QUAD-YEAR	ELEV	DESCRIPTION (INCLUDE QUAD AND YEAR IN DESCRIPTION)	BM	NUMBER
PUENTE (1965)	319.024	RDBM TAG S CB 1FT W BCR @ SW COR PUENTE AVE + SAUDER ST 76FT W + 18FT S C/L INT	BG	1086
PUENTE (1965)	323.684	RDBM TAG S CB 1FT W BCR @ SW COR PUENTE AVE + CAGLIERO ST 18FT S + 78FT W C/L INT	BG	1087
PUENTE (1965)	329.071	RDBM TAG S CB 1FT E BCR @ SE COR PUENTE AVE + BARRYDALE ST 72FT E + 18FT S C/L INT	BG	1090
PUENTE (1965)	303.628	L+BN E END WING WALL OF OUT S SIDE OF DR TO HSE NO 230 SUNSET AVE 30FT E	BG	1092
PUENTE (1965)	310.812	L+T N EDGE OF 1ST STEP FRONT OF HSE NO 556 @ SE COR SUNSET AVE + TEMPLE AVE	BG	1095
PUENTE (1965)	308.655	RDBM TAG W CB 3FT N C/L OUT @ SW COR SUNSET AVE + TEMPLE AVE 70FT W C/L INT	BG	1096
PUENTE (1965)	311.134	RDBM TAG E CB SUNSET AVE W SIDE OF ISL 40FT E C/L 15FT N C/L PROD HUTCHCROFT ST TO E	BG	1097
PUENTE (1965)	318.207	L+T NR CTR CB RET @ SW COR AMAR RD + SUNSET AVE 48FT S + 54FT W C/L INT	BG	1100
PUENTE (1965)	322.977	RDBM TAG E CB SUNSET AVE 40FT E C/L + 50FT N C/L PROD SAUDER OUT	BG	1101
PUENTE (1965)	327.784	RDBM TAG E CB 6FT S BCR @ SE COR SUNSET AVE + FAIRGROVE AVE 66FT S + 40FT E C/L INT	BG	1102
PUENTE (1965)	323.946	L+T N CB 15FT W BCR @ NW COR CADWELL ST + AMAR RD	BG	1107
PUENTE (1965)	322.313	L+T E CB 1FT N BCR @ NE COR ALDGATE AVE + AMAR RD	BG	1108
PUENTE (1965)	322.380	L+T W CB 1FT N BCR @ NW COR ALDGATE AVE + AMAR RD	BG	1109
PUENTE (1965)	320.786	RDBM TAG S CB 40FT S C/L AMAR RD + 50FT E C/L DUFF AVE	BG	1110
PUENTE (1965)	321.190	L+BRAD S CB 6FT W BCR @ SW COR AMAR RD + CALIFORNIA AVE 40FT S + 61FT W C/L INT	BG	1111
PUENTE (1965)	321.080	L+T N CB 1FT W BCR @ NW COR AMAR RD + CALIFORNIA AVE 40FT N + 55FT W C/L INT	BG	1112
PUENTE (1965)	320.259	L+T N CB 1FT E BCR 55FT E C/L EVANWOOD AVE + 40FT N C/L AMAR RD	BG	1113
PUENTE (1965)	318.607	L+T NR CTR CB RET @ NE COR AMAR RD + SUNSET AVE 51FT N + 51FT E C/L INT	BG	1114
PUENTE (1965)	318.199	L+T SW COR OF FOUNDATION SLAB OF OIL DRUM STAND @ HSE NO 14316 75FT S C/L AMAR RD + 260FT E ORANGE AVE OUT	BG	1115
PUENTE (1965)	316.736	L+BN W CB 1FT S BCR @ SW COR ORANGE AVE + AMAR RD 18FT W + 76FT S C/L INT	BG	1116
PUENTE (1965)	316.882	L+N S CB AMAR RD 1FT E BCR @ SW COR WILLOW AVE 54FT W + 40FT S C/L INT	BG	1117
PUENTE (1965)	313.953	L+BRAD S CB AMAR RD 1FT W BCR @ SW COR ARDILLA AVE 57FT W + 40FT S C/L INT	BG	1119
PUENTE (1965)	312.757	RDBM TAG E CB 1FT N BCR @ SW COR PUENTE AVE + AMAR RD 40FT E + 75 N C/L OUT	BG	1120

QUAD-YEAR	ELEV	DESCRIPTION (INCLUDE QUAD AND YEAR IN DESCRIPTION)	BM NUMB
BASELINE (1965)	292.830	L+T N CB VALLEY BLVD 1FT E BCR @ NE COR DURFEE AVE 55FT E + 34FT N C/L INT	BG 1200
BASELINE (1965)	291.607	L+BN W CB E DR TO BLDG NO 1255 VALLEY BLVD @ NW COR DURFEE AVE 2FT N OF END	BG 1202
PUENTE (1965)	295.138	L+SPK SW COR CONC BASE RR SIGNAL NO 4963 7FT N OF N RAIL SPRR 40FT E OF DURFEE AVE	BG 1204
BASELINE (1965)	332.668	L+T NR CTR CB RET @ SW COR GALE AVE + HACIENDA BLVD 47FT S + 47FT W C/L INT MKD (BM P)	BG 1328
BASELINE (1965)	332.052	RDBM TAG N CB 9FT E BCR @ NW COR HACIENDA BLVD + GALE AVE 36FT N + 70FT W C/L INT	BG 1329
BASELINE (1965)	329.390	L+T NEDGE CON WK TO HSE NO 15618 8FT W OF END 25FT W C/L FARMSTEAD ST + 55FT S C/L GALE AVE	BG 1330
BASELINE (1965)		OUT L+T SE COR WEIR BOX 30FT N C/L GALE AVE + 7FT W C/L KWIS AVE	BG 1332
BASELINE (1965)	327.723	L+T EDGE CONC WK TO HSE NO 15550 GALE AVE 45FT S C/L	BG 1334
BASELINE (1965)	328.842	L+T W EDGE CONC DR TO HSE NO 15350 GALE AVE 35FT S C/L	BG 1335
BASELINE (1965)	329.715	L+BN NE COR WEIR BOX 30FT N C/L GALE AVE + 150FT W C/L GATLIN AVE	BG 1336
BASELINE (1965)	324.369	CS MON IN WELL 8 IN DIA @ C/L INT GALE AVE + TURNBULL CANYON RD MKD (PUENTE D 11.)	BG 1337
BASELINE (1965)	325.347	L+T 3FT E BCR @ NW COR GALE AVE + TURNBULL CANYON RD	BG 1338
BASELINE (1965)	324.748	L+BN 4FT E BCR @ NE COR GALE AVE + VALENCIA AVE	BG 1339
BASELINE (1965)	325.681	L+SPK 7FT S BCR @ SE COR GALE AVE + VALENCIA AVE MKD (AZ 42)	BG 1340
BASELINE (1965)	330.352	L+SPK 4FT E OF END CB @ NE COR GALE AVE + 9TH AVE MKD (AZ 28)	BG 1341
BASELINE (1965)	332.747	L+T NE COR OF CONC HEAD OF CULV @ SW COR GALE AVE + 9TH AVE	BG 1342
BASELINE (1965)	361.335	L+BN NR CTR CB RET @ SE COR GALE AVE + 7TH AVE	BG 1347
BASELINE (1965)	358.496	L+BN E CB 17FT N OF GALE AVE @ NE COR GALE AVE + 7TH AVE 70FT N + 18FT E C/L INT MKD (SD205)	BG 1348
BASELINE (1965)	322.137	L+T 4FT S BCR @ SE COR CLARK AVE + 7TH AVE	BG 1350
BASELINE (1965)	320.058	L+T 7FT N BCR @ NE COR CLARK AVE + 7TH AVE	BG 1351
BASELINE (1965)	309.049	L+BN NW COR CONC SLAB OVER STORM DRAIN 20FT E C/L 7TH AVE + 6FT N OF N RAIL UPRR	BG 1352
PUENTE (1965)	293.136	L+BN S END CONC ABUT @ SE COR OF BRIDGE NO B264 12FT E C/L 7TH AVE + 300FT N UPRR	BG 1353
PUENTE (1965)	292.812	L+BN N END CONC @ SE COR CULV 15FT E C/L 7TH AVE + 1300FT N UPRR	BG 1354

QUAD-YEAR	ELEV	DESCRIPTION (INCLUDE QUAD AND YEAR IN DESCRIPTION)	BM NUMBE
PUENTE (1965)	293.738	L+BN @ NW COR OUT HDWL @ SE COR DON JULIAN RD + 7TH AVE	BG 1355
PUENTE (1965)	293.759	L+T @ SW COR CONC OUT NE COR DON JULIAN RD + 7TH AVE	BG 1356
PUENTE (1965)	296.883	L+T NW COR CONC OUT @ SE COR PROCTOR AVE + 7TH AVE	BG 1357
PUENTE (1965)	296.941	L+BN SW COR CONC OUT HDWL @ NE COR PROCTOR AVE + 7TH AVE	BG 1358
PUENTE (1965)	297.715	L+BN S CB DR TO HSE NO 159 7TH AVE 30FT W C/L	BG 1359
PUENTE (1965)	302.166	L+T W END CONC HDWL CULV 30FT S C/L VALLEY BLVD 20FT E DR TO HSE NO 14650 MKD (35-C.)	BG 1360
PUENTE (1965)	306.774	L+T NE COR WEIR BOX @ SW COR 9TH AVE + VALLEY BLVD MKD (38-C.)	BG 1361
PUENTE (1965)	308.004	L+T N CB VALLEY BLVD C/L PROD TURNBULL CANYON RD 1FT W OF E EDGE CATCH BASIN	BG 1362
BASELINE (1965)	405.173	CS MON IN WELL @ C/L INT PASS + COVINA RD + FRANCISQUITO AVE	BG 1363
BASELINE (1965)	412.127	L+BN E CB PASS + COVINA RD 144FT S C/L DOUBLEGROVE ST	BG 1365
BASELINE (1965)	428.146	L+BN S CB 2FT E BCR @ SE COR MAPLEGROVE ST + PASS + COVINA RD	BG 1368
BASELINE (1965)	439.007	CS MON IN WELL C/L PASS + COVINA RD 400FT SE OF PI S OF MAPLEGROVE ST NR WATER RESERVOIR MKD (BM 37-5 1954 RE 63)	BG 1369
BASELINE (1965)	412.351	L+BN S END HDWL 17FT OUT E C/L PASS + COVINA RD 51FT N PP NO 626276E	BG 1371
BASELINE (1965)	426.871	CS MON IN WELL @ C/L INT AMAR RD + PASS + COVINA RD	BG 1372
BASELINE (1965)	400.798	FC MON IN N END HDWL 14FT OUT 70FT N C/L INT PASS + COVINA RD + TEMPLE AVE MKD (BM 100-26 1948)	BG 1376
BASELINE (1965)	449.679	L+BN CTR CB RET N OUT @ SERV RD GEMINI ST 45FT E C/L PASS + COVINA RD	BG 1378
BASELINE (1965)	435.126	L+BN CTR CB RET OF SERV RD @ R OUT NULT ST 45FT E C/L PASS + COVINA RD	BG 1379
BASELINE (1965)	345.485	CS MON C/L INT FRANCISQUITO AVE TO W + HACIENDA BLVD	BG 1467
BASELINE (1965)	370.340	CS MON 6FT E + 1FT N C/L INT FRANCISQUITO AVE + WALNUT AVE	BG 1468
PUENTE (1965)	316.528	RDBM TAG N CB S ISLAND AMAR RD 3FT E OF CATCH BASIN @ SUNKIST AVE 40FT S + 58FT E C/L IN	BG 1561
BASELINE (1965)	358.563	CS MON IN WELL @ C/L INT OUT H AVE + GALE AVE	BG 1589
BASELINE (1965)	358.386	RDBM TAG NR CTR UNOUTABLE @ NE COR 7TH AVE + GALE AVE	BG 1590

QUAD-YEAR	ELEV	DESCRIPTION (INCLUDE QUAD AND YEAR IN DESCRIPTION)	BM	NUMBER
PUENTE (1965)	334.762	L+ BRAD IN N CB AMAR RD 40FT N C/L ON C/L PROD DEL VALLE ST	BG	1624
PUENTE (1965)	335.861	L+BRAD 1FT E BCR @ SE COR AMAR RD + DEL VALLE ST 40FT S + 48FT E C/L INT	BG	1625
PUENTE (1965)	337.431	RDBM TAG 1FT W BCR @ SW COR AMAR RD + AILERON AVE 40FT S + 58FT W C/L INT	BG	1626
PUENTE (1965)	340.765	SQ HD SPK 2FT N BCR @ NE COR AMAR RD + GREY CLIFF AVE 75FT N + 18FT E C/L INT	BG	1627
PUENTE (1965)	351.132	L+BRAD IN N CB 7FT E BCR @ NE COR ECHELON AVE + AMAR RD 40FT N + 63FT E C/L INT	BG	1628
PUENTE (1965)	351.351	RDBM TAG 1FT E BCR @ SE COR AMAR RD + ECHELON AVE 40FT S + 60FT E C/L INT	BG	1629
PUENTE (1965)	372.529	RDBM TAG 6FT W BCR @ SW COR AMAR RD + VALINDA AVE 40FT S + 75FT W C/L INT	BG	1630
PUENTE (1965)	373.934	L+T 1FT E BCR @ SE COR AMAR RD + VALINDA AVE 40FT S + 66FT E C/L INT	BG	1631
BASELINE (1965)	335.689	L+T CONC FOUNDATION OF GAS STA 33FT W C/L ALBERT ST + 50FT S C/L OLD VALLEY BLVD MKD (BM)	BG	1738
BASELINE (1965)	343.475	RDBM TAG N CB 4FT E BCR 20FT N C/L OLD VALLEY BLVD + 28FT E C/L BAJA AVE	BG	1739
BASELINE (1965)	370.330	L+BN N CONC HDWL 75FT S C/L VALLEY BLVD + 150FT W C/L WICKFORD AVE	BG	1742
BASELINE (1965)	373.088	L+T IN END OF ISL 4FT N C/L VALLEY BLVD + 60FT W C/L WICKFORD AVE	BG	1743
BASELINE (1965)	374.904	CT SPK CTR HDWL 27FT E C/L ANAHEIM-PUENTE RD + 65FT S C/L VALLEY BLVD MKD (BM 16)	BG	1744
BASELINE (1965)	379.341	RD MON IN WELL 7IN DN @ C/L INT VALLEY BLVD + PASS + COVINA RD	BG	1745
BASELINE (1965)	287.948	CS MON IN WELL 8IN DN ON C/L VALLEY BLVD + 27FT S C/L GARVEY AVE MKD (EL MONTE J5 RE 2177)	BG	1910
BASELINE (1965)	338.912	CS MON IN WELL 10IN DN 11FT S C/L WORKMAN MILL RD + 5FT W C/L LOMITAS AVE MKD (BM 11-121)	BG	2267
BASELINE (1965)	377.305	L+T CONC FOOTING OF 5FT FENCE COR @ SE COR LOMITAS AVE + 3RD AVE 30FT S + 30FT E C/L INT MKD (BM)	BG	2268
BASELINE (1965)	376.470	L+T CONC APRON OF DR TO HSE @ NE COR LOMITAS AVE + 3RD AVE 25FT N + 65FT E C/L INT MKD (BM)	BG	2269
BASELINE (1965)	372.296	L+T CONC COLLAR OF ROCK @ SW COR LOMITAS AVE + 4TH AVE 70FT S + 20FT W C/L INT MKD (BM)	BG	2270
BASELINE (1965)	372.854	CS MON IN WELL 10IN DN @ C/L INT LOMITAS AVE + 4TH AVE MKD (PUENTE A8)	BG	2271
BASELINE (1965)	285.559	CS MON IN WELL 11IN DN @ SE COR LOMITAS AVE + 5TH AVE 10FT S + 10FT E C/L INT MKD (BM 42-2)	BG	2272
BASELINE (1965)	287.656	CS MON IN WELL 10IN DN @ C/L INT LOMITAS AVE + 6TH AVE MKD (PUENTE BJA)	BG	2273
BASELINE (1965)	288.550	COE MON IN CONC HDWL @ NW COR LOMITAS AVE + 6TH AVE 33FT N + 23FT W C/L INT MKD (SJC 105)	BG	2274

QUAD-YEAR	ELEV	DESCRIPTION (INCLUDE QUAD AND YEAR IN DESCRIPTION)	BM	NUMBE
PUENTE (1965)	290.276	CS MON IN WELL 10IN DN @ C/L INT DON JULIAN RD + 6TH AVE MKD (PUENTE 9A)	BG	2276
BASELINE (1965)	351.089	L+T W CB OF W SERV RD 2FT S BCR @ SW COR GALE AVE + LATCHFORD AVE 15FT W + 44FT S C/L INT SERV RD	BG	2277
BASELINE (1965)	350.795	L+T N CB OF S SERV RD @ SE COR GALE AVE + LATCHFORD AVE 14FT N + 36FT E C/L INT SERV RD	BG	2278
BASELINE (1965)	331.511	CS MON IN WELL 10IN DN @ C/L INT GALE AVE + 9TH AVE MKD (PUENTE C-11)	BG	2279
BASELINE (1965)	328.635	L+BN N CB GALE AVE 40FT N C/L + 100FT E C/L FARMSTEAD AVE MKD (BM)	DG	2280
BASELINE (1965)	289.632	KBT SPK W CB ALLGEYER AVE @ SW COR VALLEY BLVD 25FT W 87FT C/L INT MKD (M E 222)	BG	2281
BASELINE (1965)	289.430	RDBM TAG IN E CB ALLGEYER AVE 1FT S BCR @ SE COR VALLEY BLVD 20FT E + 67FT S C/L INT	BG	2282
BASELINE (1965)	288.067	CS MON IN WELL 12IN DN 6FT N + 75FT W C/L INT VALLEY BLVD + RUMFORD AVE	BG	2283
BASELINE (1965)	287.363	L+T IN CONC WLK TO BLDG NO 12418 40FT S + 95FT W C/L INT VALLEY BLVD + RUMFORD AVE	BG	2284
BASELINE (1965)	291.437	CS MON IN WELL 12IN DN 15FT S OF N EDGE OF CONC PVMT VALLEY BLVD + 230FT W C/L SAN ANGELO AVE MKD (L-6 RE 2177)	BG	2287
BASELINE (1965)	292.282	L+T S END OF GAS PUMP ISL 65FT S VALLEY BLVD + 140FT W C/L SANTA MARIANA AVE 30FT W BLDG NO 13128	BG	2288
BASELINE (1965)	292.382	1/2IN STEEL ROD @ NW COR CONC SLAB OF BLDG NO 13148 VALLEY BLVD 40FT S C/L + 95FT E C/L SANTA MARIANA AVE	BG	2289
PUENTE (1965)	293.294	L+T S END OF GAS PUMP ISL 100FT W C/L PROD COLLWOOD AVE + 50FT N C/L VALLEY BLVD	BG	2290
PUENTE (1965)	291.571	RDBM TAG N CB 35FT E C/L PROD COLLWOOD AVE + 50FT N C/L VALLEY BLVD	BG	2291
PUENTE (1965)	291.802	CS MON IN WELL 12IN DN @ C/L INT VALLEY BLVD + VINELAND AVE MKD (TRAV STA PUENTE A-7 1940)	BG	2292
PUENTE (1965)	292.764	L+BN NW COR CONC SLAB OF BLDG NO 13602 VALLEY BLVD @ SE COR 2ND AVE + 47FT E C/L INT	BG	2293
PUENTE (1965)	306.780	CS MON IN WELL 12IN DN 16FT N + 5FT E C/L IN VALLEY BLVD + TURNBULL CANYON RD	BG	2295
BASELINE (1965)	290.732	L+T N END 1ST CONC STEP OF HSE NO 143 50FT W C/L SANTA MARIANA AVE	BG	2296
BASELINE (1965)	287.957	L+SPK @ N EDGE OF CONC DRWY OF HSE NO 216 31FT E OF C/L OF SANTA MARIANA AVE	BG	2297
BASELINE (1965)	285.346	L+SPK @ N EDGE OF CONC DRWY OF HSE NO 262 25FT E SANTA MARIANA AVE + 7FT N C/L PROCTOR ST PROD	BG	2298
BASELINE (1965)	283.666	L+T @ NW COR OF CONC WALK OF CHURCH BLDG 45FT E C/L SANTA MARIANA AVE	BG	2299

QUAD-YEAR	ELEV	DESCRIPTION (INCLUDE QUAD AND YEAR IN DESCRIPTION)	BM	NUMBER
BASELINE (1965)	282.155	L+T N EDGE CONC DRWY OUT HSE NO 411 35FT W OF C/L SANTA MARIANA AVE	BG	2300
BASELINE (1965)	279.311	L+SPK NR CTR CONC WALK TO HSE NO 13125 25FT N C/L DON JULIAN RD + 45FT W C/L SANTA MARIANA AVE	BG	2301
BASELINE (1965)	293.992	BT SPK N CB DON JULIAN RD 10FT W BCR 18FT N C/L + 50FT W C/L COBERTA AVE	BG	2303
BASELINE (1965)	294.532	L+T N CB DON JULIAN RD 2FT E BCR 18FT N C/L + 45FT E C/L COBERTA AVE	BG	2304
BASELINE (1965)	301.868	BT SPK NR N EDGE OF CONC DR TO HSE NO 13544 DON JULIAN RD 35FT S + 200FT W C/L 2ND AVE MKD (AZ-1)	BG	2305
PUENTE (1965)	301.014	L+T CONC WLK TO HSE @ NE COR 3RD AVE + PROCTOR AVE 35FT N + 35FT E C/L INT MKD (BM)	BG	2307
PUENTE (1965)	300.319	BT SPK IN CONC WLK OF HSE @ SW COR 3RD AVE + PROCTOR AVE 35FT S + 20FT W C/L INT MKD (AZ 58)	BG	2308
PUENTE (1965)	305.558	L+BN E CB 3FT N BCR @ NE COR TURNBULL CANYON RD + PROCTOR AVE 72FT N + 30FT E C/L INT MKD (BM)	BG	2310
PUENTE (1965)	306.792	L+SQ HD SPK CONC WINGWALL @ NW COR TURNBULL CANYON RD + PROCTOR AVE 27FT N + 27FT W C/L INT MKD (AZ 13)	BG	2311
PUENTE (1965)	304.999	SQ HD SPK S CB PRIV DRWY OUT TO SANITARIUM 40FT E C/L TURNBULL CANYON RD + 12FT N C/L DON JULIAN RD MKD (TBM)	BG	2312
PUENTE (1965)	304.505	CS MON IN WELL 12IN DN @ C/L INT TURNBULL CANYON RD + DON JULIAN RD MKD (PUENTE D 10A)	BG	2313
PUENTE (1965)	308.234	CS MON IN WELL 8IN DN @ C/L PROD TURNBULL CANYON RD 18FT S C/L SALT LAKE AVE MKD (PI)	BG	2314
PUENTE (1965)	309.672	L+BRAD W CB 2FT N OUT @ NE COR TURNBULL CANYON RD + CLARK AVE 30FT W 25FT W C/L INT	BG	2315
BASELINE (1965)	290.238	RDBM TAG S CB 30FT S C/L GARVEY AVE @ ENT TO UNDERPASS OF RR 450FT E VALLEY BLVD	BG	2320
PUENTE (1965)	317.874	RDBM TAG CONC CB 1FT S BCR 70FT S + 40FT E C/L INT SUNSET AVE + ELLIOT AVE	BG	2369
BASELINE (1965)	334.634	RDBM TAG N CB 36FT W BCR 113FT W + 30FT N C/L INT FRANCISQUITO AVE + PUENTE AVE	BG	2445
PUENTE (1965)	314.443	RDBM TAG IN CB AMAR RD 1FT E BCR @ NE COR BALDWIN PARK BLVD 40FT N + 76FT E C/L INT	BG	2450
PUENTE (1965)	312.910	L+BN N CB AMAR RD 5FT W BCR @ NW COR FEATHER AVE 40FT N + 66FT W C/L INT	BG	2451
PUENTE (1965)	312.576	L+PK N CB AMAR RD 3FT W BCR @ NW COR VINELAND AVE 40FT N + 66FT W C/L INT	BG	2452
PUENTE (1965)	310.845	RDBM TAG E CB VINELAND AVE 1FT S BCR @ SE COR AMAR RD 18FT E + 73FT S C/L INT	BG	2453
PUENTE (1965)	312.432	L+BRAD S CB AMAR RD 3FT W BCR @ SW COR MILLBURY AVE 40FT S + 57FT W C/L INT	BG	2454
PUENTE (1965)	311.625	RDBM TAG E CB PUENTE OUT 1FT S BCR @ ^E SW COR AMAR RD 110FT S + 39FT W C/L INT	BG	2455

QUAD-YEAR	ELEV	DESCRIPTION (INCLUDE QUAD AND YEAR IN DESCRIPTION)	BM NUMBER
PUENTE (1965)	320.635	RDBM TAG E CB BALDWIN PARK BLVD 1FT S BCR @ SE COR DALEWOOD ST 47FT S + 40FT E C/L INT	BG 2457
PUENTE (1965)	320.547	RDBM TAG IN W CB BALDWIN PARK BLVD 1FT N BCR @ SW COR DALEWOOD ST 40FT W + 55FT S C/L INT	BG 2458
PUENTE (1965)	315.982	RDBM TAG E CB BALDWIN PARK BLVD 5FT N OF N END OF BRIDGE OVER WALNUT CRK 1FT S CATCH BASIN 27FT E C/L + 245FT S C/L BESS AVE	BG 2459
PUENTE (1965)	315.998	FC MON IN CONC WINGWALL @ NW COR OF BRIDGE OVER WALNUT CRK 33FT W C/L BALDWIN PARK BLVD + 312FT S C/L BESS AVE MKD (BM 91-20)	BG 2460
PUENTE (1965)	309.933	RDBM TAG IN CONC PLANTER WALL @ NW COR AIR REDUCTION CO PLANT 60FT E C/L BALDWIN PARK BLVD + 200FT N OF DR @ S END OF BLDG + 1200FT S TORCH ST	BG 2461
PUENTE (1965)	309.925	RDBM TAG IN CONC PLANTER WALL @ SW COR AIR REDUCTION CO PLANT 60FT E C/L BALDWIN PARK BLVD + 60FT N OF DR @ S END OF BLDG + 1400FT S TORCH ST	BG 2462
PUENTE (1965)	305.063	L+T BK OF CONC WLK 9FT S OF N END @ NW COR OF INTERNATIONAL HARVESTER CO BLDG 55FT E C/L BALDWIN PARK BLVD + 246FT S C/L TEMPLE AVE	BG 2463
PUENTE (1965)	304.868	L+T S EDGE OF CONC WK @ ENT TO INTERNATIONAL HARVESTER CO BLDG 40FT E C/L BALDWIN PARK BLVD + 330FT S C/L TEMPLE AVE	BG 2464
PUENTE (1965)	299.774	RDBM TAG N CB NELSON AVE 1FT E BCR @ NE COR BALDWIN PARK BLVD 20FT N + 65FT E C/L INT	BG 2465
PUENTE (1965)	299.494	RDBM TAG E CB BALDWIN PARK BLVD 1FT N BCR SE COR NELSON AVE 50FT S + 30FT E C/L INT	BG 2466
PUENTE (1965)	297.430	L+T S EDGE CONC WLK @ ENT TO BLDG NO 166 BALDWIN PARK BLVD 40FT E C/L + 305FT N C/L RAILROAD AVE MKD (BM)	BG 2467
PUENTE (1965)	297.141	L+T SW COR OF CONC SLAB 3FT S SPRINKLER STAND PIPE 45FT E + 226FT N C/L INT BALDWIN PARK BLVD + RAILROAD AVE MKD (BM)	BG 2468
PUENTE (1965)	307.975	L+BN E CB VINELAND AVE 1FT S BCR @ SE COR GIORDANO ST 20FT E + 45FT S C/L INT	BG 2469
PUENTE (1965)	302.618	BT SPK S CB TEMPLE AVE 3FT E CB RET @ SE COR VINELAND AVE 28FT S + 50FT E C/L INT	BG 2470
PUENTE (1965)	300.864	CS TRI STA MON IN WELL @ C/L INT TEMPLE AVE + VINELAND AVE	BG 2471
PUENTE (1965)	296.162	BT SPK E CB VINELAND AVE 7FT N BCR @ NE COR NELSON AVE 20FT E + 49FT N C/L INT	BG 2472
PUENTE (1965)	328.989	L+B S CB BARRYDALE ST 2FT W BCR @ SW COR PUENTE AVE 18FT S + 84FT W C/L INT	BG 2473
PUENTE (1965)	323.693	RDBM TAG S CB CAGLIERO ST 1FT E BCR @ SE COR PUENTE AVE 18FT S + 75FT E C/L INT	BG 2474
PUENTE (1965)	319.088	RDBM TAG W CB PUENTE AVE 1FT N BCR @ NW COR SAUDER ST 40FT W + 55FT N C/L INT	BG 2475
PUENTE (1965)	304.335	CS MON IN WELL @ C/L INT PUENTE AVE + TEMPLE AVE	BG 2476

QUAD-YEAR	ELEV	DESCRIPTION (INCLUDE QUAD AND YEAR IN DESCRIPTION)	BM NUMBER
PUENTE (1965)	299.248	L+BN N CB MOCCASIN ST 8FT W BCR @ NW COR PUENTE AVE 18FT N + 90FT W C/L INT	BG 2477
PUENTE (1965)	296.249	RDBM TAG W CB PUENTE AVE 1FT N BCR @ NW COR NELSON AVE 56FT N + 42FT W C/L INT	BG 2478
BASELINE (1965)	440.322	CS MON IN WELL 24IN DN @ NW COR ON C/L PASS COVINA RD 400FT S WITZMAN DR	BG 2479
BASELINE (1965)	443.220	CS MON IN WELL 12IN DN C/L PASS COVINA RD 122FT S CALCUTTA ST 23FT W OF HSE NO 858714E	BG 2480
BASELINE (1965)	433.709	CS MON IN WELL 8 IN DN ON C/L PASS + COVINA RD 0.95MI N VALLEY BLVD @ INTERSECTION WLY PROLONGATION @ NLY SIDE HSE NO 240 500FT S TEMPLE AVE MKD (BM 37-2 1954)	BG 2697
BASELINE (1965)	422.401	FC BR MON 3IN UP ON NW COR PASS COVINA RD + AMAR RD 20FT N + 100FT W C/L INT MKD (BM 100-27)	BG 2698
BASELINE (1965)	343.043	CS MON IN WELL 8IN DN @ C/L INT FRANCISQUITO AVE + CALIFORNIA AVE MKD (RE 5869 CO ENG MON)	BG 2726
BASELINE (1965)	335.204	CS BR CAP MON FLUSH IN BASE OF TRAFFIC SIGNAL @ SW COR FRANCISQUITO AVE + PUENTE AVE 50FT W + 55FT S C/L INT	BG 2727
BASELINE (1965)	320.681	STATE HWY MON 12IN DN @ C/L INT GARVEY AVE + WACO ST	BG 2728
BASELINE (1965)	324.613	STATE HWY MON 12IN DN @ C/L INT GARVEY AVE + TRACY ST	BG 2729
BASELINE (1965)	310.873	RDBM TAG IN N CB 1FT W END OF CB TO RICHFIELD GAS STA @ NW COR FRAZIER ST + GARVEY AVE 65FT W + 20FT N C/L INT	BG 2732
BASELINE (1965)	310.051	RDBM TAG IN N CB 1FT FROM BCR @ NE COR GARVEY AVE + BESS AVE 35FT N + 20FT E C/L INT	BG 2733
BASELINE (1965)	303.013	L+T SE CONC BASE OF TRANS TOWER 24707 @ NE COR GARVEY AVE + WESTCOTT AVE 120FT E + 55FT N C/L INT	BG 2734
BASELINE (1965)	296.478	RDBM TAG N CB 1FT E BCR @ NE COR DURFEE AVE + GARVEY AVE 37FT W + 30FT N C/L INT	BG 2738
BASELINE (1965)	274.786	FC MON 6IN DN @ SE COR BRIDGE B 144S 25FT S C/L DON JULIAN RD + ABT 200FT E SANTA MARIANA MKD (RW 1964)	BG 2978
BASELINE (1965)	388.467	CS MON IN WELL 10IN DN 9FT SLY C/L LOMITAS AVE + 0.4MI SELY WORKMAN MILL RD IN FRONT OF HSE NO 13858 MKD (BM 42-1 1954)	BG 2979
BASELINE (1965)	287.331	RD HD SPK N CB 9FT W BCR @ NW COR LOMITAS AVE + 5TH AVE 20FT N + 50FT W C/L INT MKD (AZ 490)	BG 2980
PUENTE (1965)	293.149	BT SPK+L NW ABT BRIDGE OVER SAN JOSE CREEK 18FT WLY C/L INT	BG 2981
BASELINE (1965)	360.744	CS MON IN WELL 10IN DN 10 FT E SELY C/L INT GALE AVE + 7TH AVE MKD (BM 42-4 1954)	BG 2982
BASELINE (1965)	329.204	CS MON 1.5FT BACK OF CB @ NE COR GALE AVE + 9TH AVE MKD (BM 42-5 1954)	BG 2982
BASELINE (1965)	328.940	L+BRAD E CB 0.4FT S BCR @ SE COR GALE AVE + GAT-LIN AVE 75FT S + 18FT E C/L INT	BG 2984

QUAD-YEAR	ELEV	DESCRIPTION (INCLUDE QUAD AND YEAR IN DESCRIPTION)	BM	NUMBER
BASELINE (1965)	326.799	CS MON IN WELL 10IN DN ON SE COR GALE AVE + KWIS AVE 57FT SELY + 5.5FT SLY C/L INT MKD (BM 1954)	BG	2985
BASELINE (1965)	332.829	CS MON FL IN C B ON SE COR HACIENDA BLVD + GALE AVE 22FT E BCR MKD (BM 38-13A 1963)	BG	2986
BASELINE (1965)	318.552	L+BN E CB 5FT N BCR @ SE COR VALLEY BLVD + HACIENDA BLVD 41FT E + 71FT S C/L INT MKD (BM)	BG	2987
BASELINE (1965)	318.193	RDBM TAG N CB 57FT E BCR @ NE COR VALLEY BLVD + HACIENDA BLVD 40FT N + 120FT E C/L INT	BG	2988
BASELINE (1965)	334.627	RDBM TAG W CB 1FT N BCR @ NW COR OLD VALLEY BLVD + ALBERT ST 46FT N + 18FT W C/L INT	BG	2989
BASELINE (1965)	342.222	CS MON IN WELL 10IN DN @ C/L INT OLD VALLEY BLVD + BAJA AVE	BG	2990
BASELINE (1965)	353.553	L+BN E END CONC HDWL 18FT S C/L OLD VALLEY BLVD NR INT OF VALLEY BLVD MKD (BM)	BG	2991
BASELINE (1965)	353.811	RDBM TAG N CB NR W END C B 25FT N APPROX C/L N BARREL VALLEY BLVD NR INT OLD VALLEY BLVD	BG	2992
BASELINE (1965)	376.254	RDBM TAG N CB VALLEY BLVD 40FT N C/L @ E END C B 175FT W APPROX C/L ANAHEIM-PUENTE RD	BG	2993
PUENTE (1965)	312.016	CS MON IN WELL 26IN DN @ ANGLE PT PUENTE AVE 30FT NELY C/L AMAR RD MKD (RE 62)	BG	2994
PUENTE (1965)	315.723	CS MON IN WELL 18IN DN @ C/L INT AMAR RD + WILLOW AVE MKD (CO SUR RE 63) USE E EDGE	BG	2995
PUENTE (1965)	328.136	L+LS TAG 2568 CONC P IN OF STA @ SE COR AMAR RD + HACIENDA BLVD 44FT S 60FT E C/L INT	BG	2996
PUENTE (1965)	298.631	CSBM MON FL IN NW COR E WING WL OF CULVERT B 1022 5.5FT NE OF NLY CB VALLEY BLVD + ABOUT 60FT WLY PUENTE AVE MKD (BM 11-119A 1962)	BG	2997
PUENTE (1965)	295.665	RDBM TAG E CB 1FT S BCR @ SELY COR VALLEY BLVD + 3RD AVE 40FT E + 76FT S APPROX C/L INT	BG	2998
PUENTE (1965)	295.929	RDBM TAG IN CB 18FT W C/L VINE LAND AVE + 5FT N C/L PROD NELSON AVE	BG	2999
PUENTE (1965)	326.083	CS MON FL IN C B ON W SIDE HACIENDA BLVD +3FT S OF S CB PROD LOUKELTON ST MKD (BM 38-16A 1963)	BG	3000
PUENTE (1965)	334.007	CS MON FL SW COR C B ON NELY COR HACIENDA BLVD + FAIRGROVE AVE 75FT NLY + 42FT ELY APPROX C/L INT MKD (BM 38-17A 1963)	BG	3001
PUENTE (1965)	340.366	L+T S CB 30FT E BCR @ SE COR HACIENDA BLVD + MAPLEGROVE AVE 17FT S + 90FT E APPROX C/L INT	BG	3002
PUENTE (1965)	303.531	L+T W CB 3FT N BCR @ NW COR SUNSET AVE + NELSON AVE 55FT N + 36FT W APPROX C/L S END DRAIN	BG	3003
PUENTE (1965)	327.627	CS MON IN WELL 8IN DN @ C/L INT SUNSET AVE + FAIRGROVE AVE MKD (C E MON RESET 1956)	BG	3004
PUENTE (1965)	389.992	L+SPK N CB 6FT E BCR @ NE COR TEMPLE AVE + MANGATE AVE MKD (BM)	BG	3005
PUENTE (1965)	419.707	CS BM MON 2FT N OF E SIDE CONC WEIR BOX 30FT N OF NW SIDE CONC RESERVOIR + 0.1MI E OF INT TEMPLE AVE + VALINDA AVE MKD (BM 8)	BG	3006

QUAD-YEAR	ELEV	DESCRIPTION (INCLUDE QUAD AND YEAR IN DESCRIPTION)	BM	NUMBE
PUENTE (1965)	417.886	CS MON 3IN UP 112FT S C/L TEMPLE AVE 2FT W OF 4-STRAND BARBED WIRE FENCE 2010FT W OF PI + 2500FT W INT TEMPLE AVE + MANGATE AVE MKD (BM 7)	BG	3007
PUENTE (1965)	397.402	L+SPK E CB 5FT N BCR @ NE COR TEMPLE AVE + GREYCLIFF AVE MKD (BM)	BG	3008
PUENTE (1965)	399.609	L+SPK W CB 9FT N BCR @ NW COR TEMPLE AVE + LANNY AVE MKD (BM)	BG	3009
PUENTE (1965)	399.698	L+BRAD W CB 3FT N BCR @ NW COR DEL VALLE ST + PICTON ST 107FT S + 20FT W C/L INT DEL VALLE ST + TEMPLE AVE	BG	3010
PUENTE (1965)	361.833	CS MON IN WELL INT TEMPLE AVE + 5TH ST	BG	3011
PUENTE (1965)	360.674	L+T W CB 1FT N BCR @ NW COR 5TH ST + TEMPLE AVE	BG	3012
PUENTE (1965)	361.010	L+T E CB 1FT S BCR @ SE COR ECHELON AVE + MAPLE GROVE ST 55FT S + 18FT E APPROX C/L INT	BG	3013
PUENTE (1965)	360.988	L+T W CB 1FT S BCR @ SW COR ECHELON AVE + MAPLE GROVE ST 45FT S + 18FT W APPROX C/L INT	BG	3014